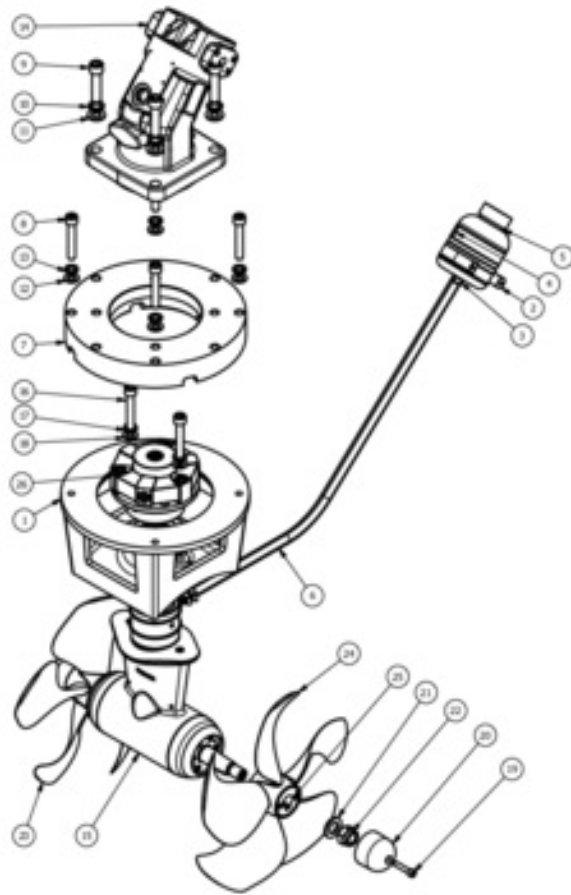


SH360/300TC-BA23 - SH360 Tunnel thruster, BA23

Spare parts (valid from 2020-05-26)



#	Description	Product
1	Motorbrakett	SM-121764 - Motorbrakett støp ø300, 360/400 thruster
2	AISI 304	61031
3	A4	61043
4	Generic	48571
5	A	61030
6	15x8mm 20bar 2 m Nitril inside NBR outside	61042
7	Adapterplate BA23	SM-141870
8	DIN 912 - M10 x 60	11160 - Skrue DIN912 M10 x 60 A4
9	DIN 912 - M12 x 50	11250 - Skrue M12 x 50 Unbraco
10	Spring Washer	212128 - Fjærskive
11	Washer	212125 - Skive M12
12	Washer	210125 - Skive M10
13	DIN 128 - A10	100036
14	Rexroth motor	SM155180
15	Gear Case	SM-135546 - Girhus SH400 maskinert
16	DIN 912 - M10 x 60	11160 - Skrue DIN912 M10 x 60 A4
17	Spring Washer	210127 - Sprengskive M10
18	Washer	210125 - Skive M10
19	DIN 912 - M6 x 30	201172
20	SE120/130/150/170/250	109998
21	Washer	201181
22	Hex Nut	101260
23	Q-Prop 300 LH	SM-136044 - Q-prop Ø300 LH - SH/SAC360
24	Q-Prop 300 RH	SM-141858
25	Propell boss maskinert	SM-136043 - Propell Boss Maskinert SH360TC
26	Flex. coupl. CFA8-24/SAE-C	SM158725

The installer alone has responsibility for the installation of the spare parts. Side-Power only warranty the spare parts supplied only.

The information given in the document was correct at the time it was published. However, Sleipner Motor AS can not accept liability for any inaccuracies or omissions it may contain. Continuous product improvement may change the product specifications without notice. Therefore, Sleipner Motor AS can not accept liability for any possible differences between product and document.