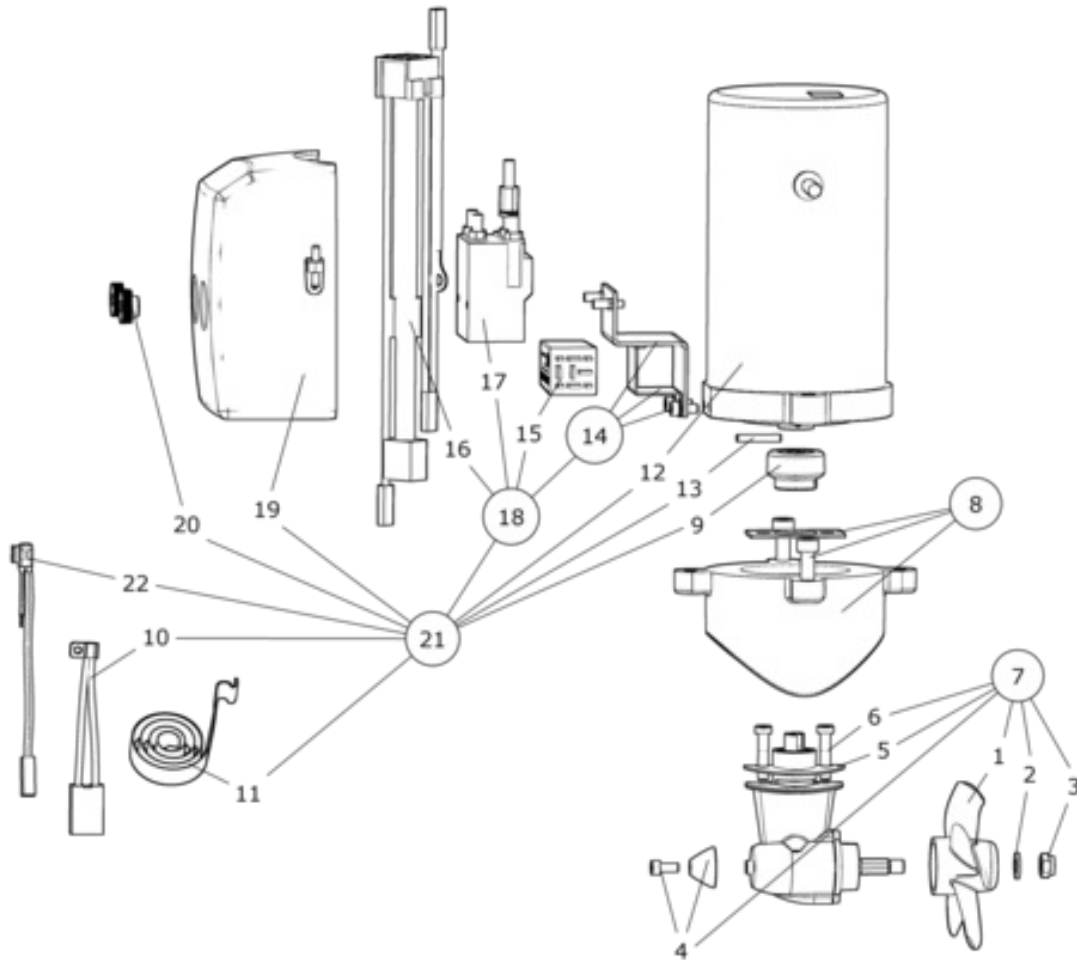


SE25/110S - SE25

Tunnel thruster, 12V



Spare parts (valid from 2019-02-04)



| # | Description | Product |
|----|----------------------------------|---|
| 1 | Propeller | SM-125960 - Propeller SE25 |
| 2 | Propeller washer | 208125 - washer DIN125A M8 A4 (SB) |
| 3 | Locknut | 3 1250 - Locknut |
| 4 | Anode | 3 1180 A - Alu anode SE30/40 |
| 5 | Gasket | 3 1310 10 - Gasket between tun./brak. SE40 |
| 6 | Gearleg bolt | 110033 - Skrue M6 x30 |
| 7 | Complete gearleg | 2 0600 - Gearleg complete SE25 |
| 8 | Complete motor bracket | SM-126302 - Complete motorbracket SE20/25 |
| 9 | Complete flexible coupling | SM-128472 - Compl. flex coupl SE20/25/30S2/40S2 |
| 10 | Brushes for motor (kit)** | ** |
| 11 | Brush springs for motor (kit)** | ** |
| 12 | Electric motor | N/A |
| 13 | Key for electric motor shaft | 112032 - Motor drive pin 4x28mm SE20..40S2 |
| 14 | Solenoid bracket kit | 2 0135 - Solenoid bracket kit SE30 |
| 15 | Electronic control box | 6 1232 I - Delay relay 12/24V |
| 16 | Internal wiring loom | 6 1200 B - Internkobling SE30 |
| 17 | Solenoid | 41571123 - Solenoid kit compl SE30 |
| 18 | Complete solenoid kit | 2 0131 12 - Solenoid kit compl SE30 |
| 19 | Solenoid Cover | 3 2024 - Reledeksel SE30 |
| 20 | Nut for solenoid cover | 6 8810 - Nut for solenoid cover |
| 21 | Complete electric motor assembly | 2 0105 12 - Elektromotor mont SE25-12V |
| 22 | Temp switch* | * |

The installer alone has responsibility for the installation of the spare parts. Side-Power only warranty the spare parts supplied only.

The information given in the document was correct at the time it was published. However, Sleipner Motor AS can not accept liability for any inaccuracies or omissions it may contain. Continuous product improvement may change the product specifications without notice. Therefore, Sleipner Motor AS can not accept liability for any possible differences between product and document.