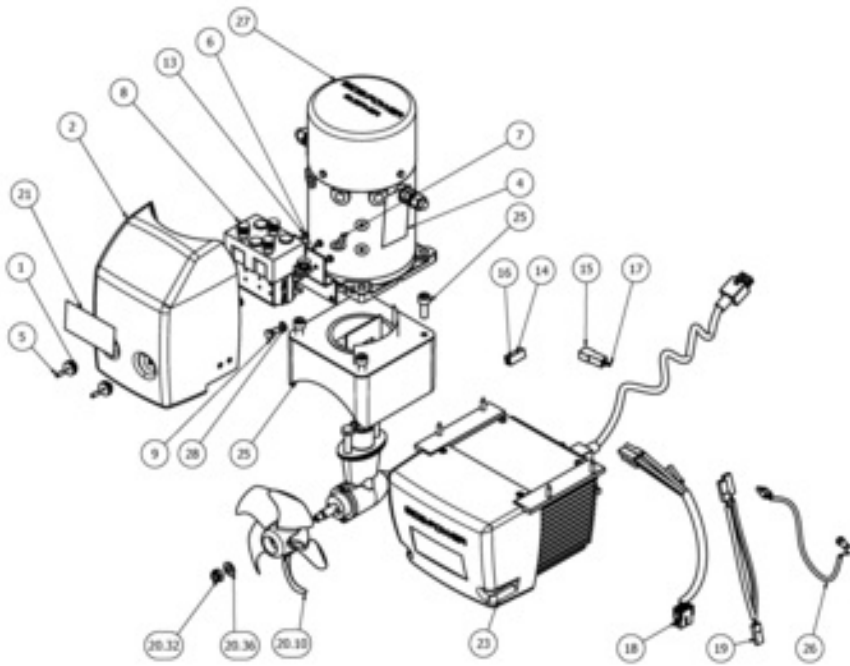




**Tunnel thruster, 12v-IP**

**Spare parts (valid from 2020-07-10)**



<b>#</b>	<b>Description</b>	<b>Product</b>
1	Plastic nut	6 8807
2	Relay cover SE60S	4 2026 A
4	Label termination	7 8571
5	DIN 916 - M4 x 12	6 1284
6	Relay bracket SE60	4 2033
7	Contact	RK0008
8	Relay	4 1472 12
9	DIN 933 - M6 x 12	10 1225
13	ISO 7045 - M4 x 6	7 1500
14	RK005	RK005
15	RK004	RK004
16	RK003	RK003
17	RK002	RK002
18	Internal clutch cruise control (SEP only)	6 1223
19	Power connector	6 1222
20.10	Propeller Ø137mm	5 1260
20.32	DIN 985 - M8x1.25	3 1250
20.36	DIN 125 - A 8.4	208125
21	Label SEP50	SM-132681
23	PPC 5xx	03-01-060-120-01
25	Engine bracket SE50	SM-125075
26	Temp sensor	SM153171
27	Electric motor	SM152335-02
28	DIN 6798 - A 6.4	6 1268

The installer alone has responsibility for the installation of the spare parts. Side-Power only warranty the spare parts supplied only.

The information given in the document was correct at the time it was published. However, Sleipner Motor AS can not accept liability for any inaccuracies or omissions it may contain. Continuous product improvement may change the product specifications without notice. Therefore, Sleipner Motor AS can not accept liability for any possible differences between product and document.