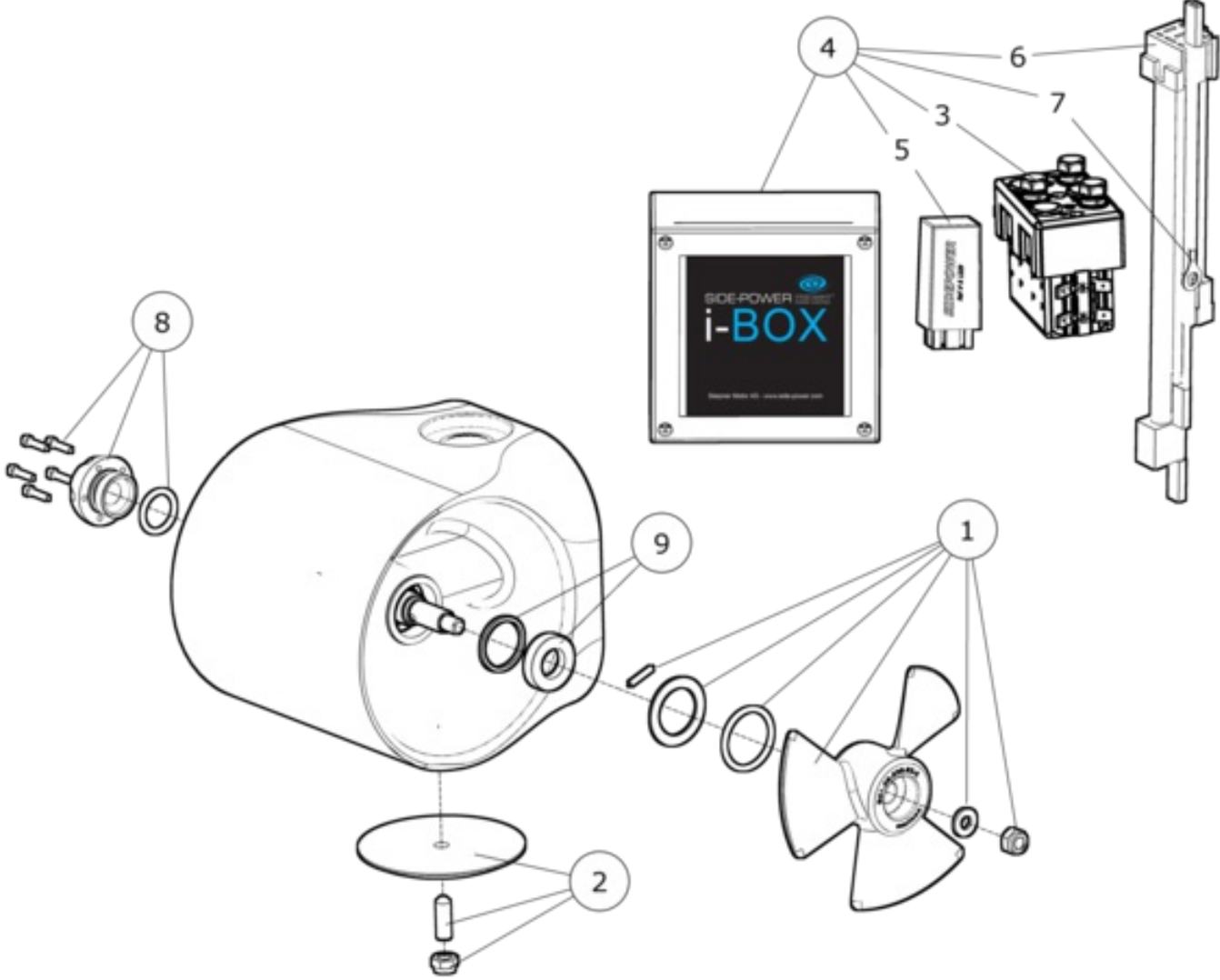


EX110D - EX110 Dual 12V thruster



SIDE-POWER

Spare parts (valid from 2017-11-27)



#	Description	Product
1	Propeller kit	50320 - Propeller kit EX series
2	Anode kit	4 1190 - Anode Zinc Exturn KIT
3	Solenoid kit	41571124 - Rele kit EX -12v
4	iBox	102250-12V - Relay I-box 12v
5	Electronic Control box	6 1232 I - Delay relay 12/24V, new type
6	EX cable	6 1850 - Kabel Exturn
7	IPC interface cable	102252 - IPC- interface Exturn
8	End cap kit	137309 - Exturn end cap kitt
9	Seal kit EX	137318 - Seal kit Exturn

The installer alone has responsibility for the installation of the spare parts. Side-Power only warranty the spare parts supplied only.

The information given in the document was correct at the time it was published. However, Sleipner Motor AS can not accept liability for any inaccuracies or omissions it may contain. Continuous product improvement may change the product specifications without notice. Therefore, Sleipner Motor AS can not accept liability for any possible differences between product and document.