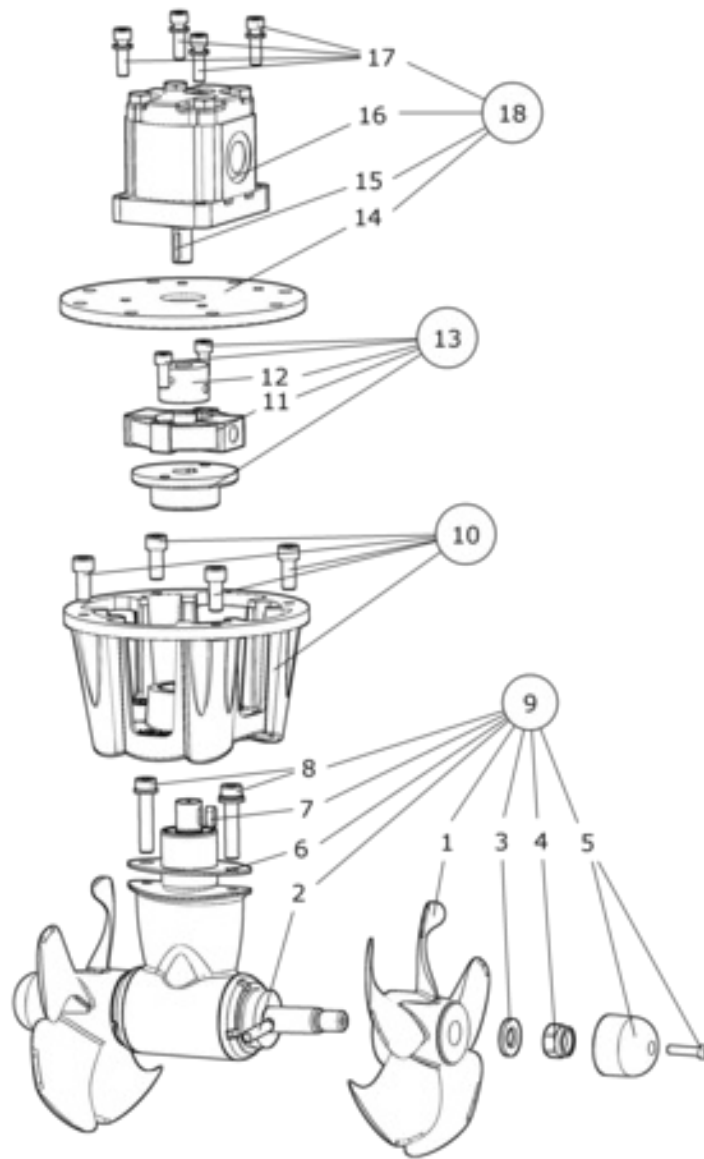


SH160/215T-U06 - SH160 Tunnel thruster, U06

Spare parts (valid from 2017-09-12)



#	Description	Product
1	Propeller	9 1261-UTGÅTT - Prop ø215/5bl Q-Prop Composite-BRUK SM151913
2	Propeller key	9 1241 - Drivpinne SE120-170
3	Propeller washer	20 1181 - Skive
4	Locknut	10 1260 - DIN985 M16 CZ132
5	Anode	20 1180 A - Alu anode SE120/130/150/170
6	Gasket (between gearleg and tunnel)	9 1355 - Pakning gearhus SE120-150/215T
7	Drive shaft key	10 1440 - Kile drivaksel SE100/+ +
8	Gearleg bolt	10 1080 - Skrue M10 x 50 Unbraco
9	Complete gearleg	10 0600 - Gearhus montert SE120/150
10	Complete motor bracket	9 0500 - Komplet motorbrakett SE120/15
11	Rubber element	20 1459 - Fleks.kobling element str2
12	Hub flexible coupling	20 1458 - Sylindrisk boss N1,Ø15,L-28mm
13	Complete flexible coupling	10 1450HYD - Fleks.kobling komplett SP220 H
14	Adaptor plate	10 21301 - Hyd. plate maskinert SH100/220
15	Drive shaft key	7 1440 - Kile hyd.motor
16	Hyd. Motor options:	[Archived] 000-0096-76 - Eagle repaire Ultra Classic
16a	U-06(6ccm)	72100/U-06 - Hydraulikk motor 6ccm ultra
16b	U-08(8ccm)	72100/U-08 - Hydraulikk motor 8ccm ultra
16c	U-10(10ccm)	72100/U-10 - Hydraulikk motor 10ccm ultra
16d	U-11(11ccm)	72100/U-11 - Hydraulikk motor 11ccm ultra
16e	U-14(14ccm)	72100/U-14 - Hydraulikk motor 14ccm ultra
17	Hydraulic motor bolts	6 1360 - Skrue M8 x 30 Unbraco
18	Hyd. Motor assembly options:	[Archived] 000-0096-76 - Eagle repaire Ultra Classic
18a	SH160HYD motor, U-06, complete	72100UL2 - Hyd. motor SH100/160-6ccm U
18b	SH160HYD motor, U-08, complete	72110UL2 - Hyd. motor mont-U 8ccm Ultra
18c	SH160HYD motor, U-10, complete	72115UL2 - Hyd. motor mont-U 10ccm Ultra
18d	SH160HYD motor, U-11, complete	102100UL2 - Hyd. motor montSH100/240-11ccm
18e	SH160HYD motor, U-14, complete	72114UL - Hyd. motor mont-U 14ccm Ultra

The installer alone has responsibility for the installation of the spare parts. Side-Power only warranty the spare parts supplied only.

The information given in the document was correct at the time it was published. However, Sleipner Motor AS can not accept liability for any inaccuracies or omissions it may contain. Continuous product improvement may change the product specifications without notice. Therefore, Sleipner Motor AS can not accept liability for any possible differences between product and document.